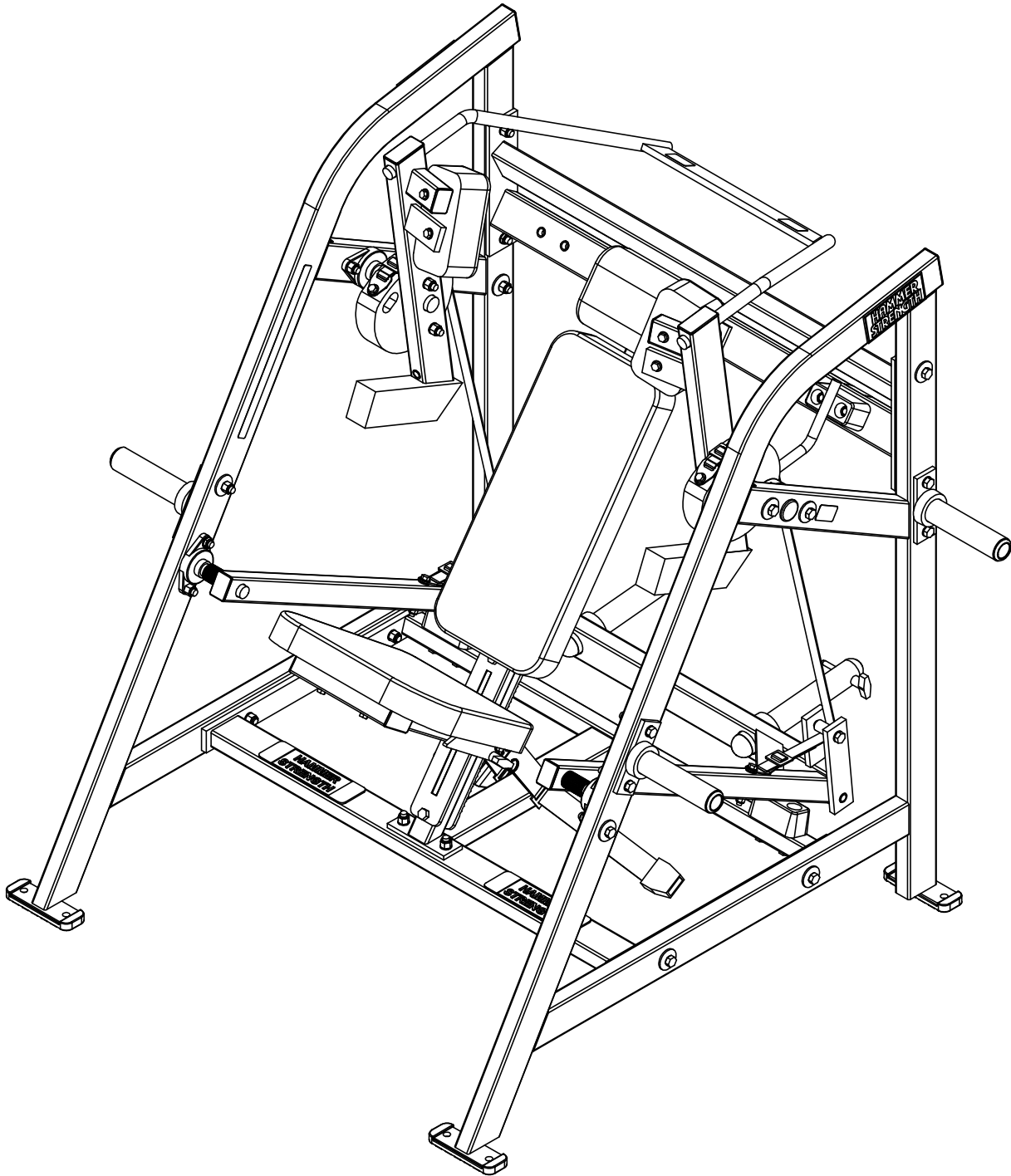


**HAMMER STRENGTH EQUIPMENT
PLPO PLATE LOADED PULLOVER**

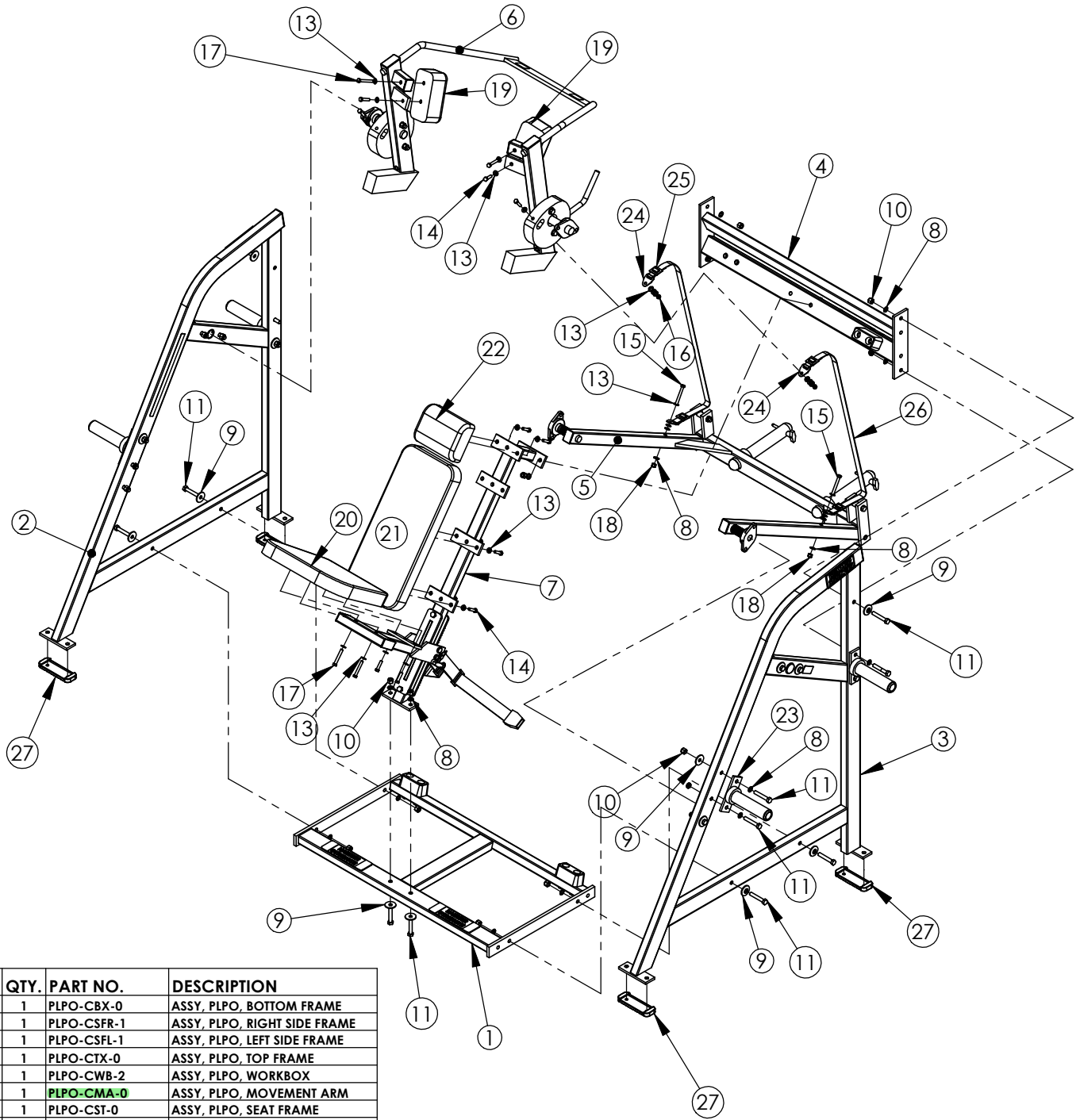
Rev: A02



WEIGHT = 388.4 lbs / 176.5kg
LENGTH = 50
WIDTH = 65
HEIGHT = 60

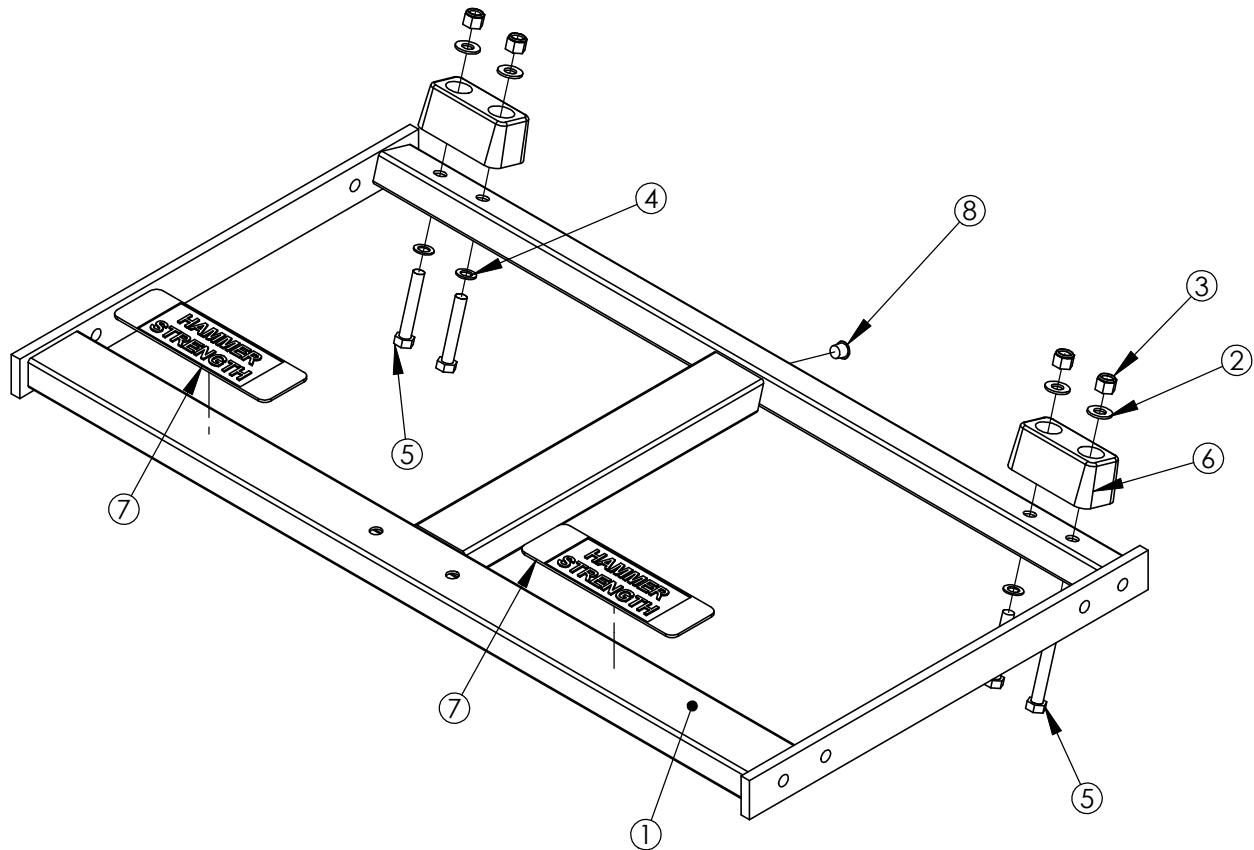
HAMMER STRENGTH EQUIPMENT

PLPO Exploded



ITEM NO.	QTY.	PART NO.	DESCRIPTION
1	1	PLPO-CBX-0	ASSY, PLPO, BOTTOM FRAME
2	1	PLPO-CSFR-1	ASSY, PLPO, RIGHT SIDE FRAME
3	1	PLPO-CSFL-1	ASSY, PLPO, LEFT SIDE FRAME
4	1	PLPO-CTX-0	ASSY, PLPO, TOP FRAME
5	1	PLPO-CWB-2	ASSY, PLPO, WORKBOX
6	1	PLPO-CMA-0	ASSY, PLPO, MOVEMENT ARM
7	1	PLPO-CST-0	ASSY, PLPO, SEAT FRAME
8	23	WASH.5STAR	1/2" INTERNAL LOCK WASHER
9	14	H-BACK-WASH	BACKING WASHER
10	14	NUT.5LOCK	1/2 DIA THICK LOCK NUT
11	18	HHB.5X3	1/2 X 3 BOLT
12	4	NUT.5JAMLOCK	1/2 THIN LOCK NUT
13	28	WASH.375SAE	3/8" SAE FLAT WASHER
14	12	HHB.375X1.5	STEEL BOLT 3/8 X 1.5
15	2	HHB.375X3	STEEL BOLT 3/8 X 3
16	2	NUT.375JAMLOCK	3/8 THIN LOCK NUT
17	4	HHB.375X2.5	STEEL BOLT 3/8 X 2.5
18	2	NUT.375LOCK	3/8 THICK LOCK NUT
19	2	U-ILPO	ARM PAD
20	1	U-16-11	16X11 PAD
21	1	U-24-10	24X10 PAD
22	1	U-8-4.5	8X4.5 PAD
23	4	H-HORN-ASSY	ASSY, WEIGHT HORN
24	4	H-BELT-END	CAM STRAP END FITTING
25	4	H-BELT-SLIDE	CAM STRAP SLIDE FITTING
26	2	PLPO-STRAP	PLPO STRAP
27	4	MM-8	2 X 6 FLANGE RUBBER SLIPPER

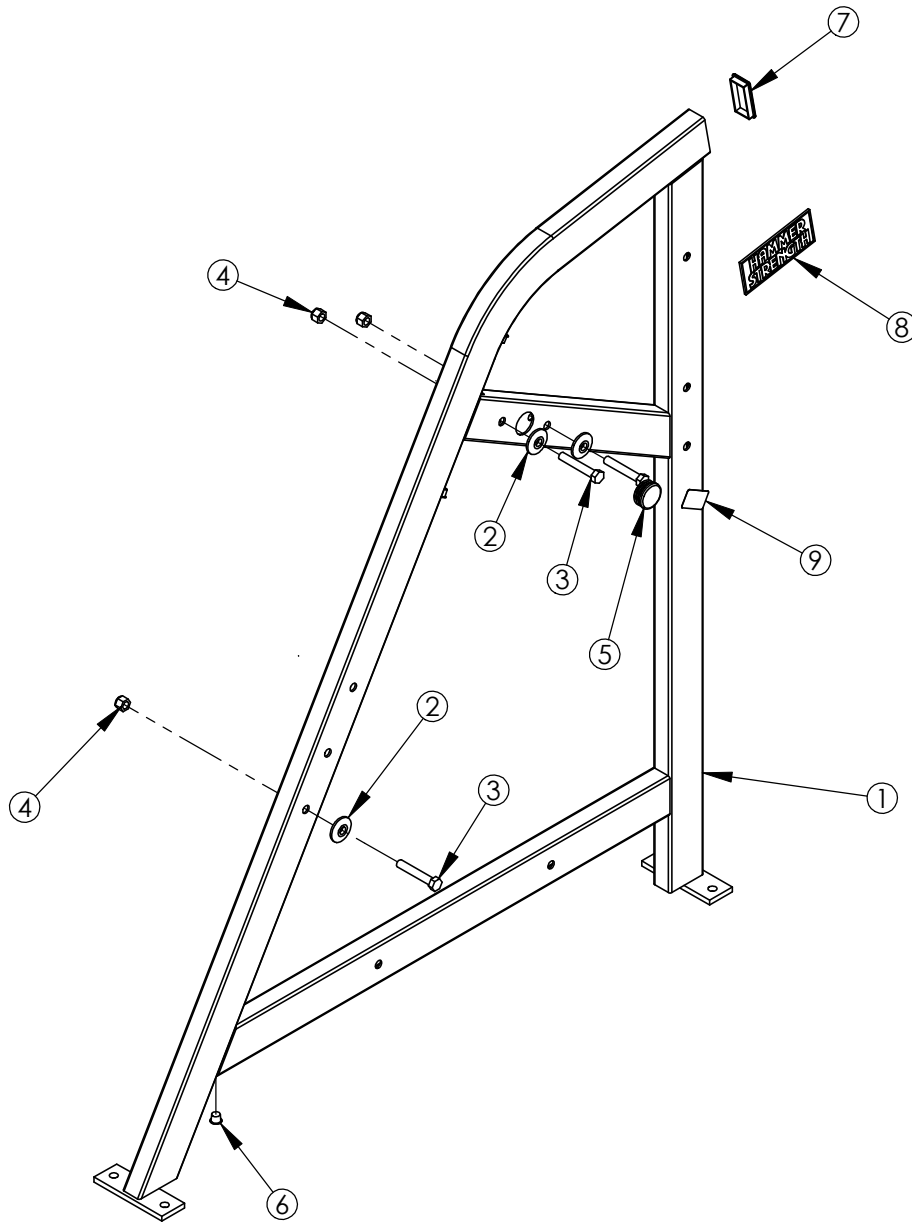
HAMMER STRENGTH EQUIPMENT
PLPO-CBX-0, ASSY, PLPO, BOTTOM FRAME



ITEM NO.	QTY.	PART NO.	DESCRIPTION
1	1	PLPO-BX-0	WLDMT, PLPO, BOTTOM FRAME
2	4	WASH.5SAE	1/2" SAE FLAT WASHER
3	4	NUT.5LOCK	1/2 DIA THICK LOCK NUT
4	4	WASH.5STAR	1/2" INTERNAL LOCK WASHER
5	4	HHB.5X3	1/2 X 3 BOLT
6	2	H-BUMP-MED	MM2 MEDIUM
7	2	H-NONSKID 3X9	PLASTIC NON SKID STRIP 3 X 9
8	1	H-HPLUG (REG)	9/16IN HOLE PLUG

WEIGHT = 40lbs / 18kg
 LENGTH = 44
 WIDTH = 24
 HEIGHT = 5

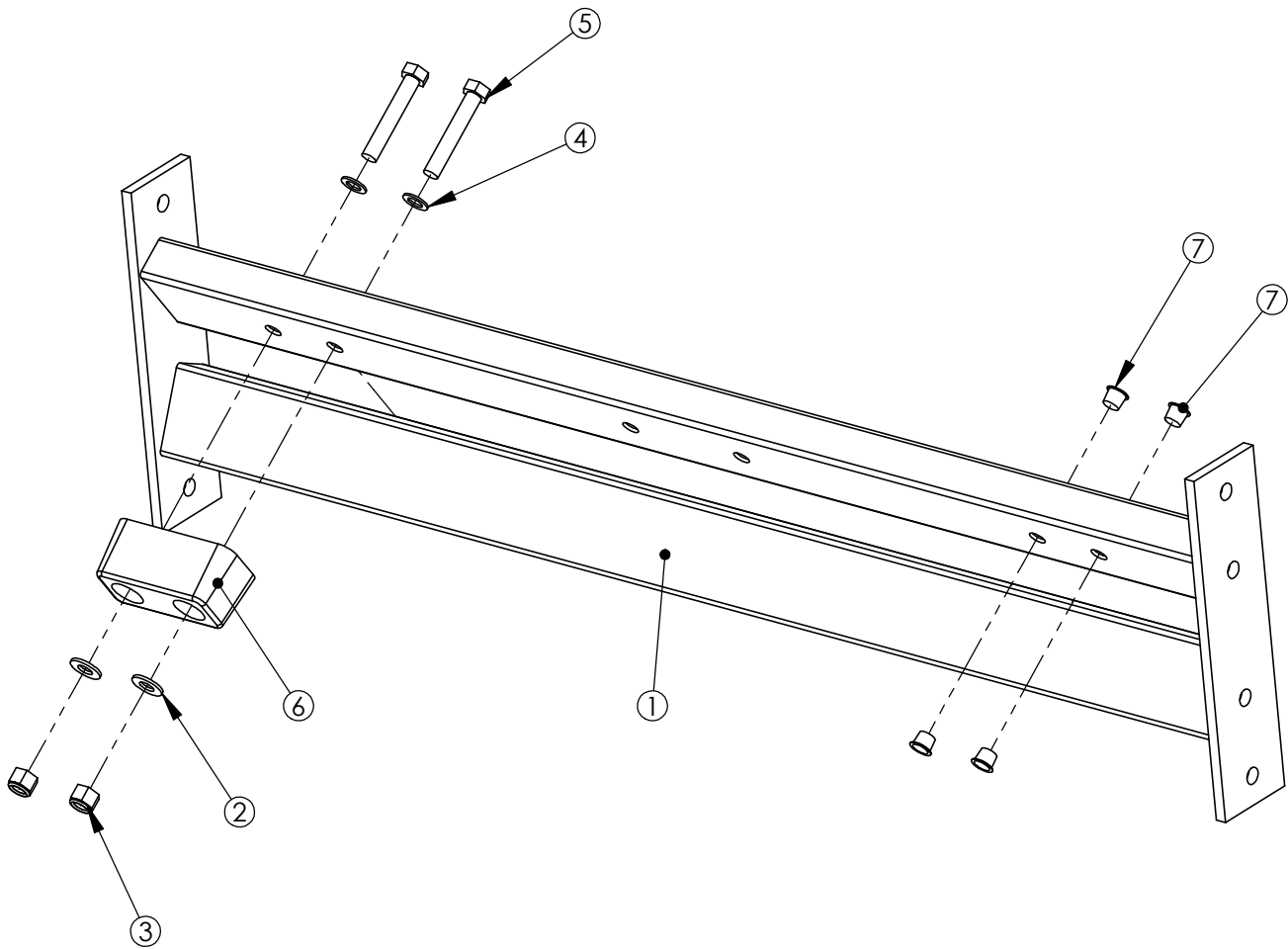
**HAMMER STRENGTH EQUIPMENT
PLPO-CSFL-1, ASSY, PLPO, LEFT SIDE FRAME**



ITEM NO.	QTY.	PART NO.	DESCRIPTION
1	1	PLPO-SF-0	WLDMT, PLPO, SIDE FRAME
2	3	H-BACK-WASH	BACKING WASHER
3	3	HHB.5X3	1/2 X 3 BOLT
4	3	NUT.5LOCK	1/2 DIA THICK LOCK NUT
5	1	H-LOCK-PLUG(LARGE)	LARGE LOCKING PLUG
6	3	H-HPLUG (REG)	9/16IN HOLE PLUG
7	1	RC1530-1Q1	CAP:1-1/2 X 3 RECTANGLE PLUG
8	1	H-NAME PLATE	NAMEPLATE (45156-P)
9	1	STAY CLEAR	STAY CLEAR DECAL

WEIGHT = 60lbs / 27kg
 LENGTH = 52
 WIDTH = 6
 HEIGHT = 60

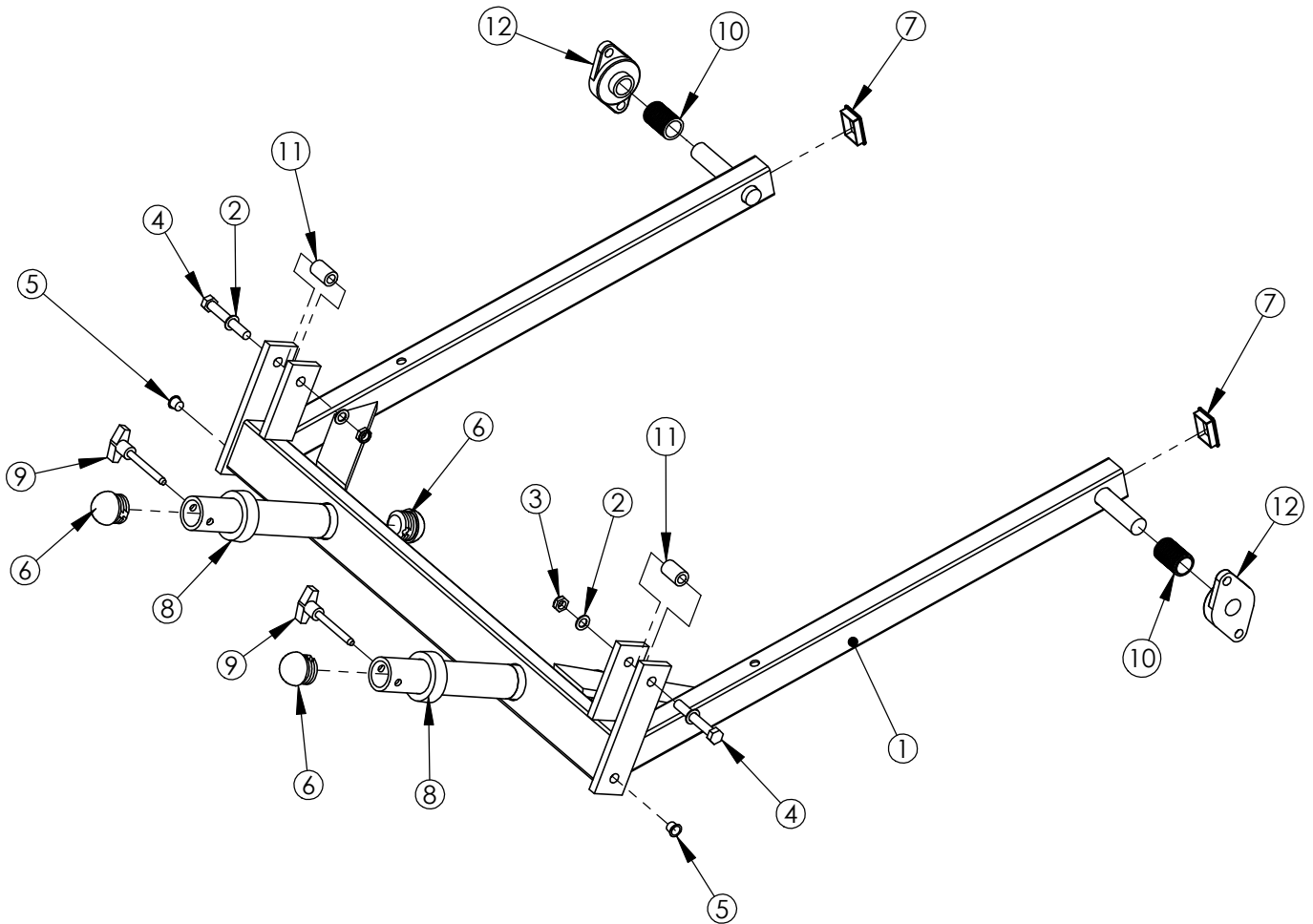
**HAMMER STRENGTH EQUIPMENT
PLPO-CTX-0, ASSY, PLPO, TOP FRAME**



ITEM NO.	QTY.	PART NO.	DESCRIPTION
1	1	PLPO-TX-0	WLDMT, PLPO, TOP FRAME
2	2	WASH.5SAE	1/2" SAE FLAT WASHER
3	2	NUT.5LOCK	1/2 DIA THICK LOCK NUT
4	2	WASH.5STAR	1/2" INTERNAL LOCK WASHER
5	2	HHB.5X3	1/2 X 3 BOLT
6	1	H-BUMP-MED	MM2 MEDIUM
7	4	H-HPLUG (REG)	9/16IN HOLE PLUG
8	1	STAY CLEAR	STAY CLEAR DECAL

WEIGHT = 32lbs / 14.5kg
 LENGTH = 43.5
 WIDTH = 12
 HEIGHT = 5

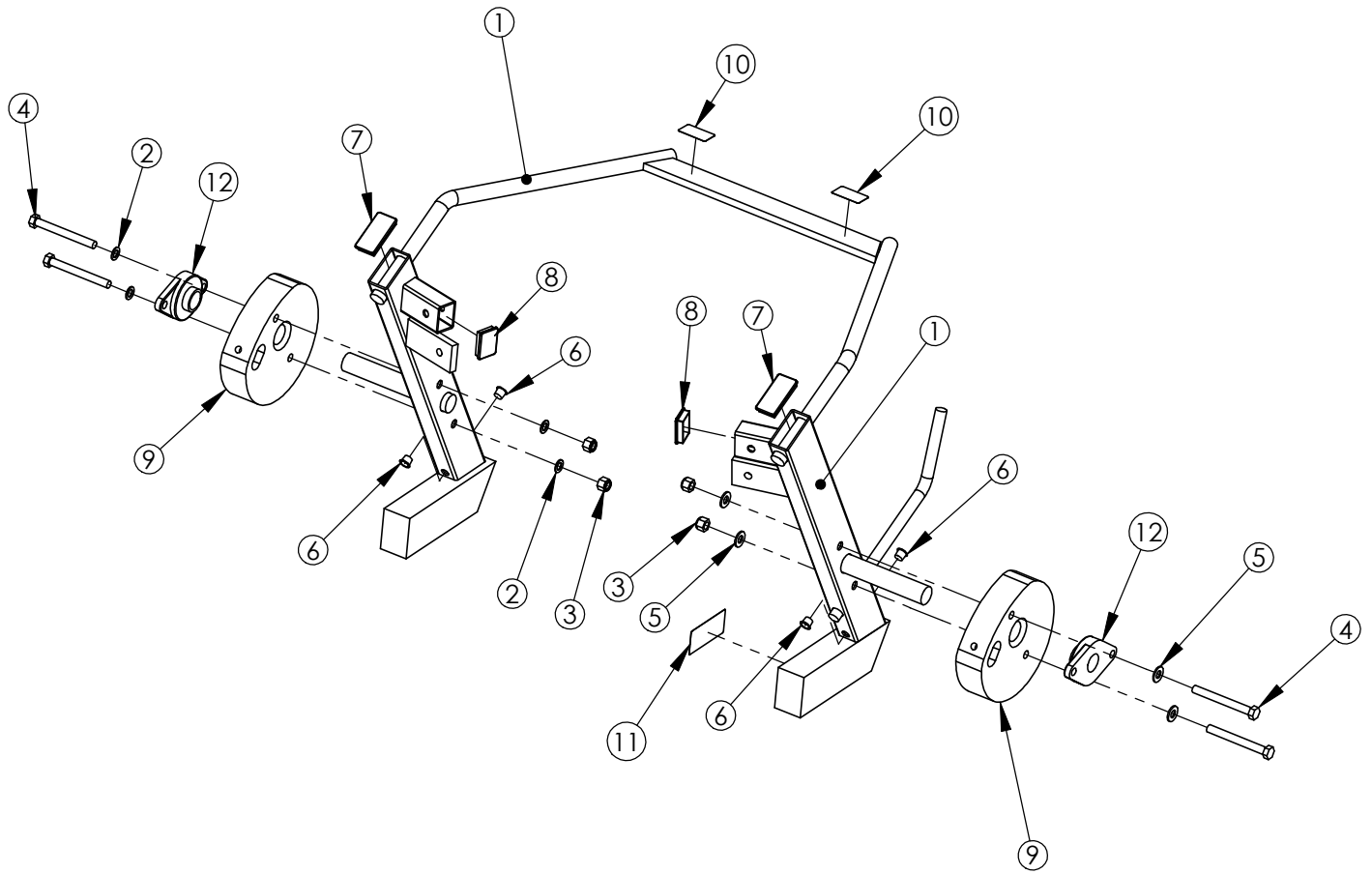
**HAMMER STRENGTH EQUIPMENT
PLPO-CWB-2, ASSY, PLPO, WORKBOX**



ITEM NO.	QTY.	PART NO.	DESCRIPTION
1	1	PLPO-WB-1	WLDMT, PLPO, WORKBOX
2	4	WASH.5STAR	1/2" INTERNAL LOCK WASHER
3	2	NUT.5JAMLOCK	1/2 THIN LOCK NUT
4	2	HHB.5X3.5	1/2 X 3 1/2 BOLT
5	2	H-HPLUG (REG)	9/16IN HOLE PLUG
6	4	RUBCAP1-2	RUBBER CAP #1
7	2	RC1520-1Q1	CAP:1-1/2 X 2 RECTANGLE PLUG
8	2	H-RUBRNG	MM5 RING
9	2	SELECTOR PIN-3	SELECTOR PIN 3 IN.
10	2	ACCORDIAN	SHAFT GUARD
11	2	H-CAM-SPACER	CAM STRAP SPACER
12	2	H-BEAR-SML	SMALL BEARING

WEIGHT = 45lbs / 20.5kg
 LENGTH = 45
 WIDTH = 44
 HEIGHT = 8.5

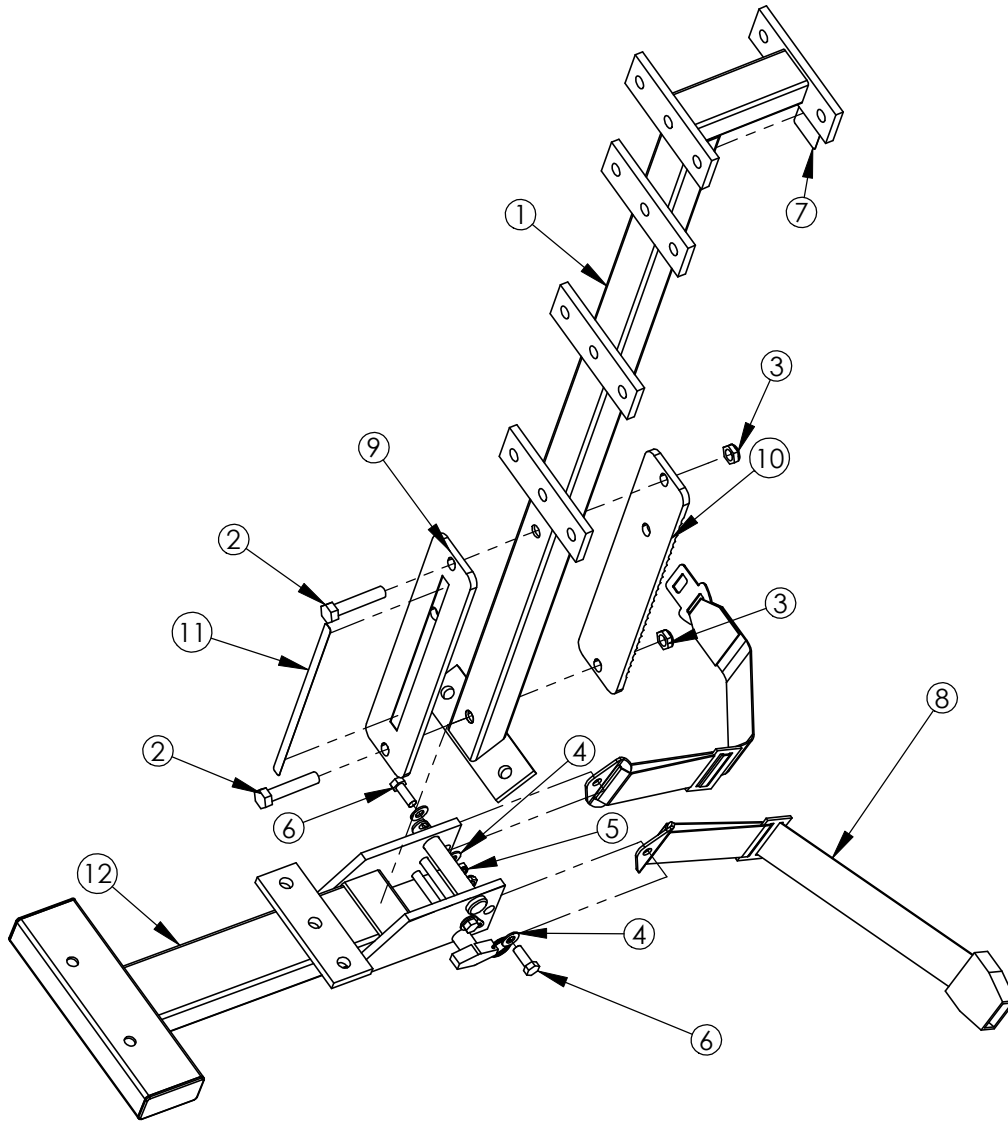
HAMMER STRENGTH EQUIPMENT
PLPO-CMA-0, ASSY, PLPO, MOVEMENT ARM



ITEM NO.	QTY.	PART NO.	DESCRIPTION
1	1	PLPO-MA-0	WLDMT, PLPO, WORKARM
2	4	WASH.5STAR	1/2" INTERNAL LOCK WASHER
3	4	NUT.5LOCK	1/2 DIA THICK LOCK NUT
4	4	HHB.5X4.5	1/2 X 4 1/2 BOLT
5	4	WASH.5SAE	1/2" SAE FLAT WASHER
6	4	H-HPLUG (REG)	9/16IN HOLE PLUG
7	2	RC1530-1Q1	CAP:1-1/2 X 3 RECTANGLE PLUG
8	2	RC1520-1Q1	CAP:1-1/2 X 2 RECTANGLE PLUG
9	2	CAM5	CAM #5
10	2	STAY CLEAR	STAY CLEAR DECAL
11	1	8773701	ASTM LABEL
12	2	H-BEAR-LGE	LARGE BEAR - EFHSFTJ206-20G

WEIGHT = 85.6 lbs / 38.9 kg
 LENGTH = 18
 WIDTH = 45.5
 HEIGHT = 26

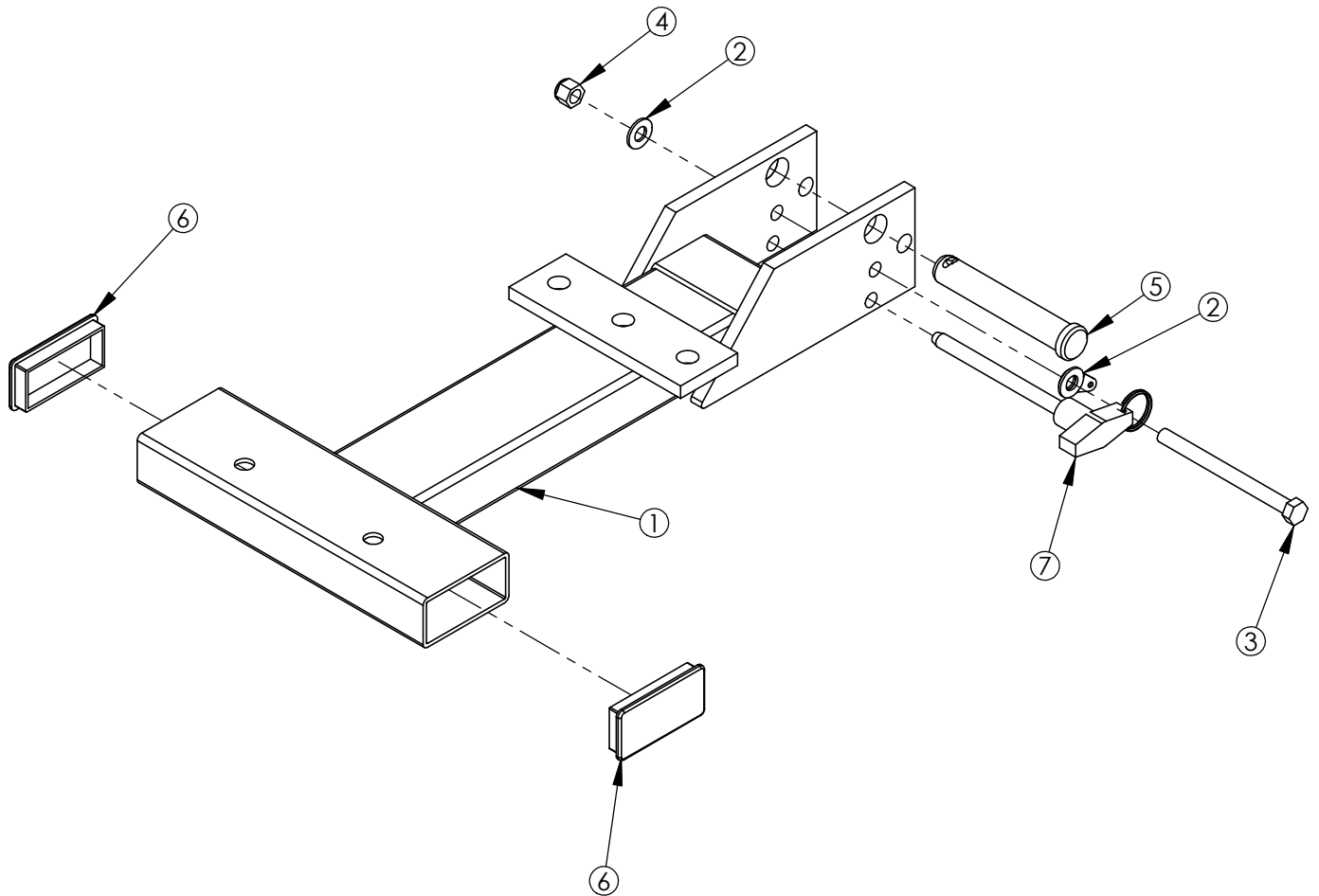
**HAMMER STRENGTH EQUIPMENT
PLPO-CST-0, ASSY, PLPO, SEAT FRAME**



ITEM NO.	QTY.	PART NO.	DESCRIPTION
1	1	PLPO-ST-0	WLDMT, PLPO, SEAT FRAME
2	2	HHB.5X2.5	1/2 X 2 1/2 BOLT
3	2	NUT.5JAMLOCK	1/2 THIN LOCK NUT
4	4	WASH.375SAE	3/8" SAE FLAT WASHER
5	2	NUT.375JAMLOCK	3/8 THIN LOCK NUT
6	2	HHB.375X1	STEEL BOLT 3/8 X 1
7	1	SERIAL NUMBER	SERIAL NUMBER
8	1	SEATBELT-ASSEM	Seatbelt, Complete
9	1	H-SEATRCKS-N	PLASTIC SEAT GUIDES(PP229)NEW)
10	1	H-SEATRCKS-RIB	SEATRACK BACK
11	1	SEAT NUMBER	SEAT ADJ. NUMBER
12	1	CSTD-ST2-1	ASSY, STANDARD SEAT 2

WEIGHT = 30lbs / 13.5kg
 LENGTH = 38
 WIDTH = 10.5
 HEIGHT = 40

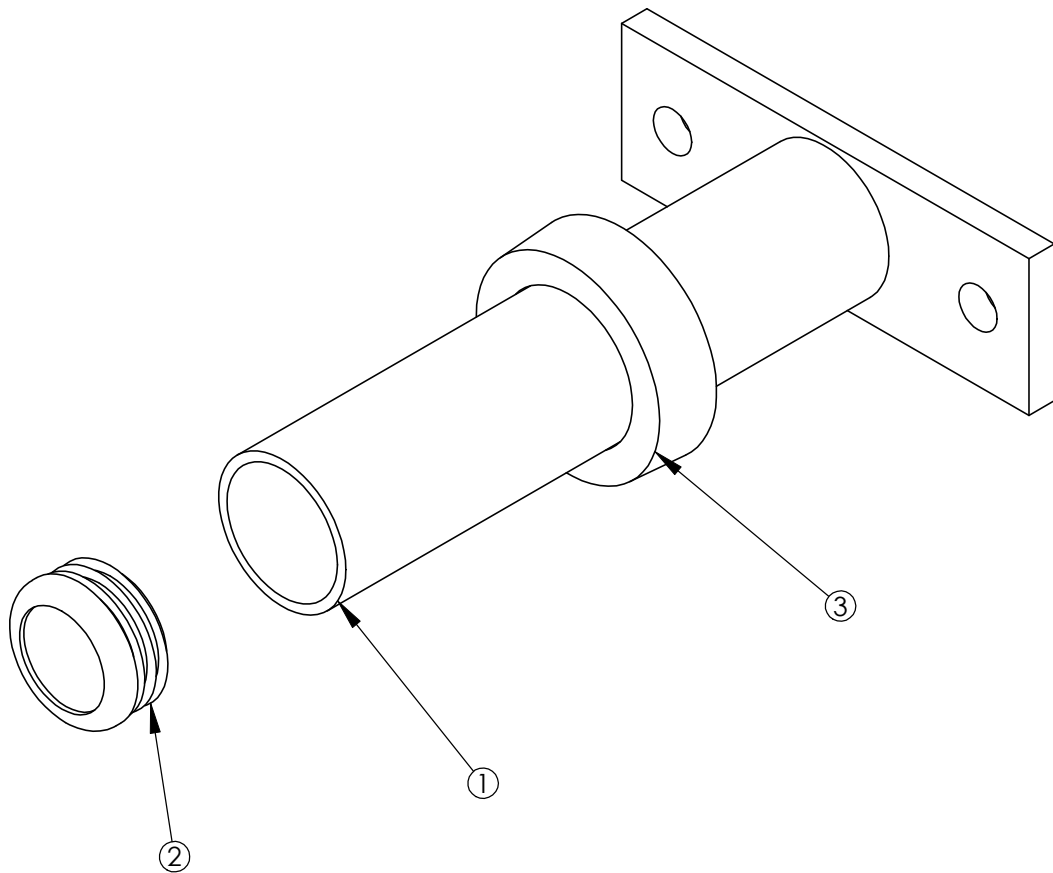
HAMMER STRENGTH EQUIPMENT
CSTD-ST2-1: ASSY, STANDARD SEAT 2



ITEM NO.	QTY.	PART NO.	DESCRIPTION
1	1	STD-ST2	Standard Seat #2
2	2	WASH.375SAE	3/8" SAE FLAT WASHER
3	1	HHB.375X4.5	STEEL BOLT 3/8 X 4.5
4	1	NUT.375LOCK	3/8 THICK LOCK NUT
5	1	STD SEAT PIN	LONG SEAT PIN (HDADJ)
6	2	RC1530-1Q1	CAP:1-1/2 X 3 RECTANGLE PLUG
7	1	SELECTPIN	ASSY, STD SEAT SELECTOR PIN

WEIGHT = 13 lb
 LENGTH = 20 1/2"
 WIDTH = 10 1/4"
 HEIGHT = 3"

HAMMER STRENGTH EQUIPMENT
H-HORN-ASSY: WEIGHT HORN ASSEMBLY



ITEM NO.	QTY.	PART NO.	DESCRIPTION
1	1	H-HORN	WLDMT, WEIGHT HORN
2	1	8078001	CAP, END 1.75 DIA RD 14-20 GA
3	1	H-RUBRNG	MM5 RING

WEIGHT = 3 1/4 lb
 LENGTH = 8 5/8"
 WIDTH = 6"
 HEIGHT = 3"